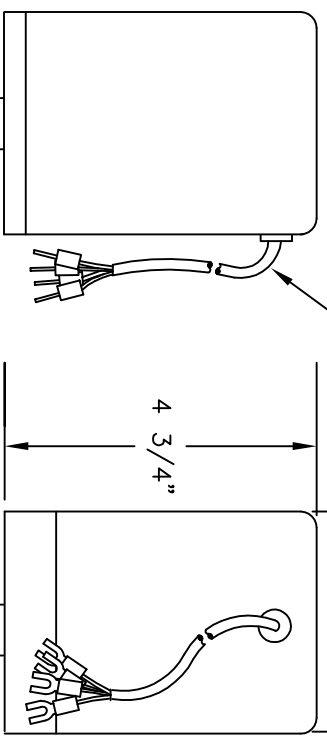


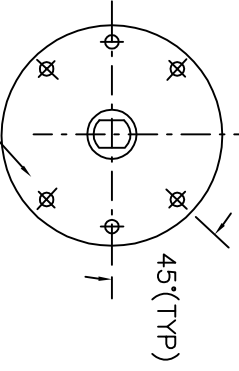
MANUFACTURED IN CALIF. U.S.A. UNDER THE FOLLOWING PATENTS: 5137257, 5461290, 5471123, 5488275, 5543694, 5712548. U.S. AND FOREIGN PATENTS PENDING.

REV.	BY	DATE	APPRVD.	P/N
				VA21VF-10-0-10

4 LEAD CABLE, LENGTH=2 FEET WITH #6 SPADE LUG CONNECTORS



.265(FLATS) .375 DIA.



MOUNTING HOLES THREADED #10-32UNEF-2A X 3/8 MIN. DEEP, 6 PLACES ON 2.750Ø BOLT CIRCLE

ACTUATOR

INPUT CURRENT	0-10 VDC
INPUT IMPEDANCE	18K OHM
FEEDBACK	4-20mA SCALED OVER THE NUMBER OF TURNS
RPM	10
POWER REQUIRED	24 VDC/50 WATTS MIN
DYNAMIC BRAKING	INSTALLED
LIMIT SWITCHES	INSTALLED
MICRO-PROCESSOR	INSTALLED
TORQUE LIMITER	FACTORY SET FOR SIZE OF VALVE ORDERED. OR APPROX. 21 IN.LBS MAX.
SEATING TORQUE	FACTORY SET TO PREVENT VALVE SEAT DAMAGE OR SET TO CUSTOMERS SPECIFICATION. OCCURS IN THE LAST 30° ROTATION. UNLESS VALVE CHOSEN DOES NOT REQUIRE CLOSURE.

ENVIRONMENTAL:

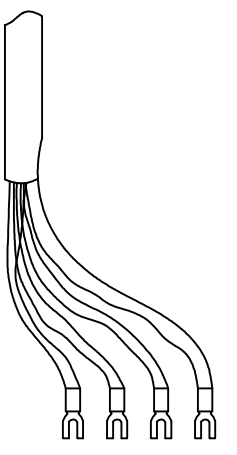
OPERATING TEMPERATURE	-30°C TO +85°C
MOISTURE	SEALED AND SPLASH PROOF
INSULATION RESISTANCE	100 MEGOHMS @ 500 VDC
DIELECTRIC STRENGTH	500 VAC
WEIGHT	2.5 LBS. APPROX.

MATERIAL:

COVER	SATIN ANODIZED ALUMINUM
BASE	ANODIZED ALUMINUM
OUTPUT SHAFT	STAINLESS STEEL
CABLE	22 GAUGE,VINYL SLEEVE
SCREWS	STAINLESS STEEL

VALVE KIT:

[ORDERED SEPARATELY, MOUNTED TO ACTUATOR AT ETI SYSTEMS]  
INCLUDES VALVE, BRACKET, COUPLER AND HARDWARE, IF NOT MOUNTED.



BLACK(RETURN)  
BROWN(4-20mA)  
RED(24Vdc)  
GREEN(EARTH)

TOLERANCES

XX = +/- .010" FRACT. = +/- 1/64"  
XXX = +/- .005" ANGLES = +/- 1/2"  
ALL SPECIFICATIONS SUBJECT TO CHANGE WITHOUT NOTICE.

SCALE	DATE: 10-8-24
	BY
	APPRVD AT
CODE IDENT: 19477	



ETI SYSTEMS  
CARLSBAD CALIFORNIA

TITLE  
VALVE ACTUATOR

PART NO.  
VA21VF-10-0-10