

**SPECIFICATIONS**

**ELECTRICAL**  
 RESISTANCE RANGE ----- 1K TO 200K OHMS  
 RESISTANCE TOLERANCE ----- ±10%  
 LINEARITY(INDEPENDENT) ----- ±0.5%  
 ELECTRICAL ANGLE ----- 320±5°  
 END RESISTANCE ----- 0.2% MAX.  
 RESOLUTION ----- ESSENTIALLY INFINITE  
 INSULATION RESISTANCE ----- 1000MEG OHMS @1000 VDC  
 DIELECTRIC STRENGTH ----- 1000 VAC  
 POWER RATING ----- 2 WATTS  
 CONTACT RESIS. VARIATION ----- BELOW 2% C.R.V.  
 OUTPUT SMOOTHNESS ----- LESS THAN 0.1%

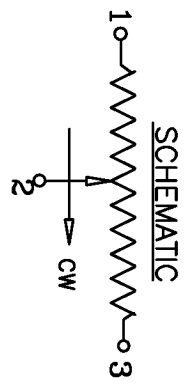
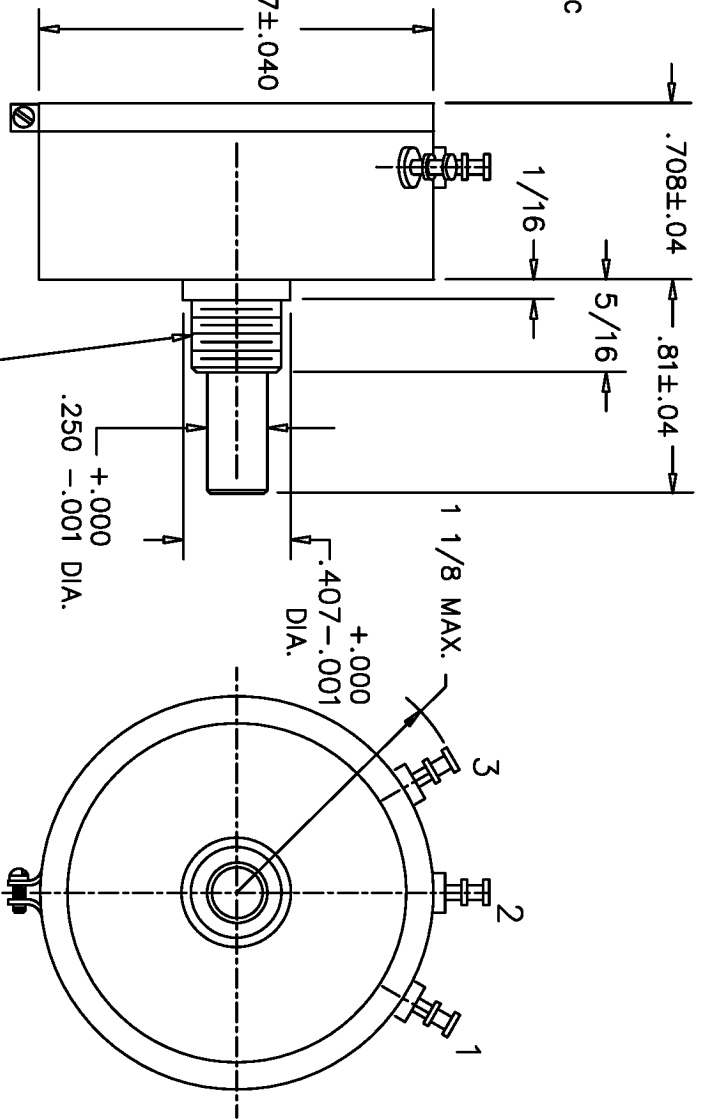
**MECHANICAL**  
 NO OF TURNS ----- 1  
 MECHANICAL ROTATION ----- 320+10°/-0°  
 ROTATIONAL LIFE ----- 50,000,000 TURNS  
 STOP STRENGTH ----- N/A  
 TORQUE ----- 0.5 OZ IN.  
 WEIGHT ----- 1 OZ.

**ENVIRONMENTAL**  
 OPERATING TEMPERATURE ----- -55C TO +125C  
 TEMPERATURE COEFFICIENT ----- ±400 PPM°/C  
 VIBRATION ----- 10HZ TO 2000HZ 15G  
 SHOCK ----- 50G  
 MOISTURE RESISTANCE ----- 40°C 95%RH 120 HOURS

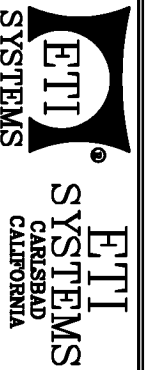
**MATERIALS**  
 HOUSING ----- ANODIZED ALUMINUM  
 SHAFT ----- STAINLESS STEEL  
 TERMINALS ----- GOLD PLATED BRASS  
 RESISTANCE ELEMENT ----- CONDUCTIVE PLASTIC

**OPTIONAL FEATURES**  
 SHAFT MODIFICATIONS  
 REAR SHAFT  
 CENTER TAP  
 O'RING SHAFT SEAL  
 SERVO MOUNT  
 SPECIAL ANGLES  
 MULTIPLE SECTIONS

CONDUCTIVE PLASTIC RESISTANCE ELEMENT



SCALE	DATE: 11-18-87
NONE	BY
APPRV'D	BT
CODE IDENT: 194777	



TITLE  
 SINGLE TURN POTENTIOMETER

PART NO.  
 SP40B

TOLERANCES  
 XX = +/- .010" FRACT. = +/- 1/64"  
 XXX = +/- .005" ANGLES = +/- 1/2"  
 ALL SPECIFICATIONS SUBJECT TO CHANGE WITHOUT NOTICE.