

**SPECIFICATIONS**

**ELECTRICAL**

RESISTANCE RANGE ----- 50 OHMS TO 50K OHMS  
 RESISTANCE TOLERANCE ----- ±3.0%  
 LINEARITY(INDEPENDENT) ----- ±0.5%  
 ELECTRICAL ANGLE ----- 330°±2°  
 END RESISTANCE ----- 0.2% MAX.  
 RESOLUTION ----- SEE CHART  
 INSULATION RESISTANCE ----- 1000MEG OHMS @1000 VDC  
 DIELECTRIC STRENGTH ----- 1000 VAC  
 POWER RATING ----- 1.0 WATT

**MECHANICAL**

NO OF TURNS ----- 1  
 MECHANICAL ROTATION ----- 330°+10°-0°  
 ROTATIONAL LIFE ----- 1,000,000 TURNS  
 STOP STRENGTH ----- N/A  
 TORQUE ----- 0.5 OZ IN.  
 WEIGHT ----- APPROX. 3.5 OZ.

**ENVIRONMENTAL**

OPERATING TEMPERATURE ----- -55°C TO +105°C  
 TEMPERATURE COEFFICIENT ----- SEE CHART  
 VIBRATION ----- 10HZ TO 2000HZ 15G  
 SHOCK ----- 50G  
 MOISTURE RESISTANCE ----- 40°C 95%RH 240 HOURS

**MATERIALS**

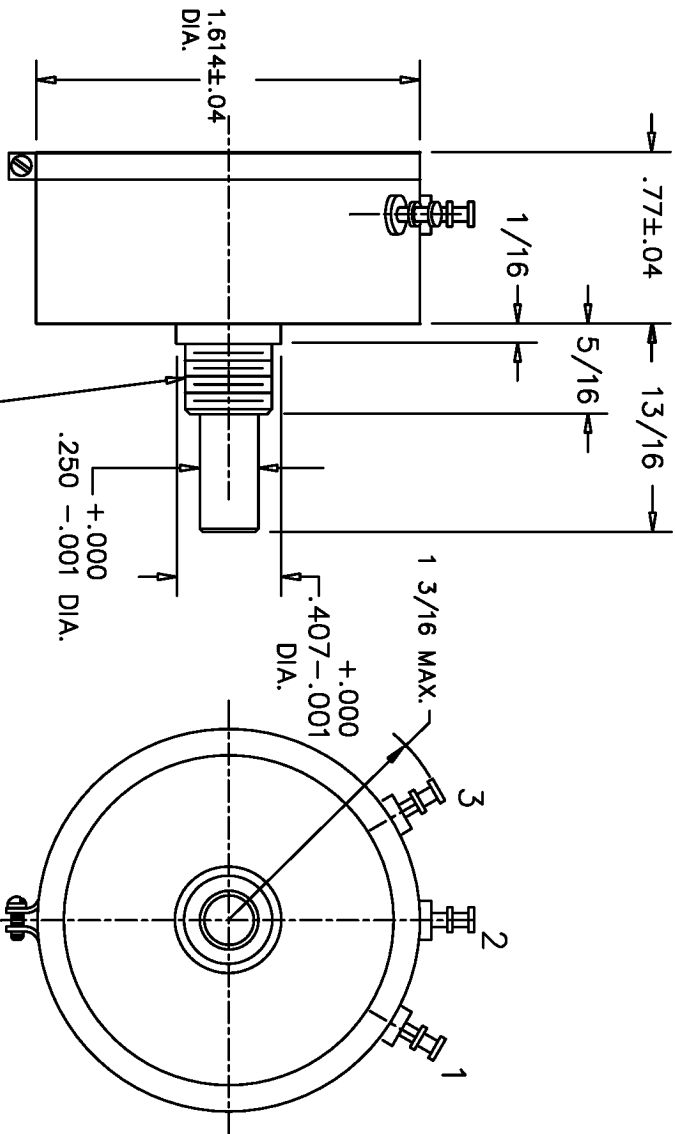
HOUSING ----- ANODIZED ALUMINUM  
 SHAFT ----- STAINLESS STEEL  
 TERMINALS ----- GOLD PLATED BRASS  
 RESISTANCE ELEMENT ----- WIREWOUND

**OPTIONAL FEATURES**

SHAFT MODIFICATIONS  
 REAR SHAFT  
 CENTER TAP  
 O'RING SHAFT SEAL  
 SERVO MOUNT  
 SPECIAL ANGLES  
 MULTIPLE SECTIONS

RESISTANCE CHART

|                         |      |      |      |      |      |      |      |      |      |      |
|-------------------------|------|------|------|------|------|------|------|------|------|------|
| RESISTANCE              | 50   | 100  | 200  | 500  | 1K   | 2K   | 5K   | 10K  | 20K  | 50K  |
| RESOLUTION              | .200 | .154 | .125 | .091 | .100 | .080 | .055 | .046 | .036 | .035 |
| TEMPERATURE COEFFICIENT | 80   | 80   | 80   | 80   | 20   | 20   | 20   | 20   | 20   | 20   |
| PPM/°C                  |      |      |      |      |      |      |      |      |      |      |



|                         |     |        |          |
|-------------------------|-----|--------|----------|
| REV.                    | BY  | DATE   | PART NO. |
| D                       | DMS | 7/2/97 | SW45B    |
| REVISED SPECIFICATIONS. |     |        |          |

**WIREWOUND RESISTANCE ELEMENT**

**TOLERANCES**

XX = +/- .010" FRACT. = +/- 1/64"  
 XXX = +/- .005" ANGLES = +/- 1/2°

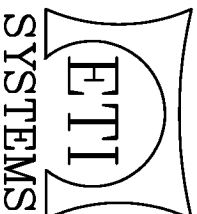
ALL SPECIFICATIONS SUBJECT TO CHANGE WITHOUT NOTICE.

|         |          |
|---------|----------|
| SCALE   | NONE     |
| DATE:   | 12-14-90 |
| BY      |          |
| APPRV'D | BT       |

THIS DOCUMENT CONTAINS PROPRIETARY DATA OF POLARIS INDUSTRIAL ENTERPRISES, INC. NO DISCLOSURE, REPRODUCTION, OR USE OF ANY PART THERE OF MAY BE MADE EXCEPT BY WRITTEN PERMISSION.

**TITLE**

SINGLE TURN POTENTIOMETER



CARLSBAD CALIFORNIA

PART NO.

SW45B