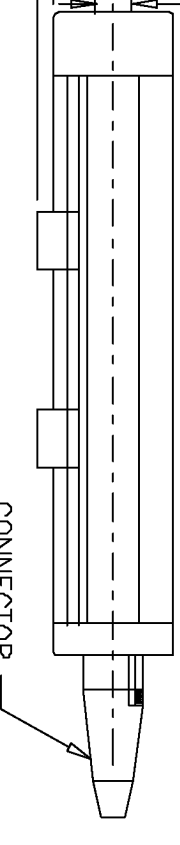
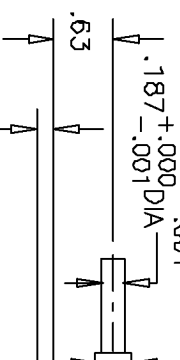
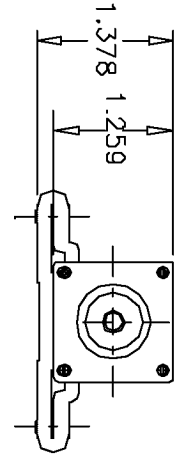


REV.	BY	DATE	PART NO.
E	BT	7-27-99	LCP30
ADDED PLAIN SHAFT			

ELECTRICAL
 RESISTANCE RANGE-----SEE CHART
 RESISTANCE TOLERANCE-----±20%
 LINEARITY/INDEPENDENT-----SEE CHART
 RESOLUTION-----ESSENTIALLY INFINITE
 STROKE-----SEE CHART
 OUTPUT SMOOTHNESS-----<0.1% AGAINST INPUT VOLTAGE
 POWER RATING @ 40°C-----SEE CHART
 INSULATION RESISTANCE-----1000 MEGOHMS AT 500VDC MIN.
 DIELECTRIC STRENGTH-----1 MINUTE AT 900VAC
 CONTACT RES. VARIATION-----BELOW 2% CRV

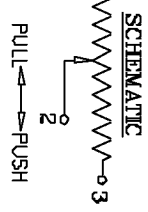
MECHANICAL
 STROKE-----SEE CHART
 STROKE STRENGTH-----4.4 LBS. MIN.
 FRICTION-----BELOW 7 OZ.
 LIFE-----10,000,000 STROKES
 WEIGHT-----SEE CHART

ENVIRONMENTAL
 OPERATING TEMPERATURE RANGE--30°C TO 105°C 2.75±.04 1.987 1.259
 TEMPERATURE COEFFICIENT-----±400PPM/°C
 VIBRATION-----10Hz TO 2,000Hz 15G
 MOISTURE RESISTANCE-----40°C 95%RH 120 HOURS
 SHOCK-----50G 11ms
 MATERIALS-----ANODIZED ALUMINUM
 HOUSING-----STAINLESS STEEL
 SHAFT-----NON-STANDARD OPTIONS
 SPECIAL RESISTANCE AND LINEARITY
 MACHINED SHAFTS
 EXTERNAL SPRING RETURN



DIMENSION TABLE

DASH NO.	APPROX WEIGHT	MECHANICAL STROKE ±.080	ELECTRICAL STROKE ±.040	STD/NON-STD/BEST	LINEARITY PRACTICAL	RESISTANCE RANGE	'L' DIM ±.040	POWER RATING
-100	7.1 OZ.	4.133	3.937	±0.5%	±0.1%	1K - 10K	6.692	1.25W
-200	12.3 OZ.	8.070	7.874	±0.5%	±0.1%	2K - 20K	10.629	1.5W
-300	17.6 OZ.	12.007	11.811	±0.5%	±0.1%	3K - 20K	14.566	2.0W
-400	22.9 OZ.	15.944	15.748	±0.5%	±0.1%	4K - 100K	18.503	2.5W
-500	28.2 OZ.	19.881	19.685	±0.5%	±0.1%	5K - 200K	22.440	5.0W
-750	45.8 OZ.	29.724	29.527	±0.5%	±0.1%	5K - 200K	32.283	7.5W
-1000	62.9 OZ.	39.566	39.370	±0.5%	±0.1%	10K - 500K	42.126	10.0W



CONDUCTIVE PLASTIC RESISTANCE ELEMENT

SCALE	NDNE
DATE:	6-30-92
BY	PD
APPRVD	BT

THIS DOCUMENT CONTAINS PROPRIETARY DATA OF POLARIS INDUSTRIAL ENTERPRISES, INC. NO DISCLOSURE, REPRODUCTION, OR USE OF ANY PART THERE OF MAY BE MADE EXCEPT BY WRITTEN PERMISSION.



CONDUCTIVE PLASTIC RESISTANCE ELEMENT

TOLERANCES
 XX = +/- .010" FRACT. = +/- 1/64"
 XXX = +/- .005" ANGLES = +/- 1/2°

ALL SPECIFICATIONS SUBJECT TO CHANGE WITHOUT NOTICE.

CODE IDENT: 19477

TITLE
 LINEAR MOTION POTENTIOMETER

PART NO.
 LCP30

CONNECTOR # OF POLES = 6
 CABLE DIA. = 1/4 MAX

LCP30S = SPRING RETURN(EXTERNAL)
 LCP30T = 10-32X1/2 LONG
 THREADED SHAFT
 LCP30P = PLAIN SHAFT