

SPECIFICATIONS

ELECTRICAL

CURRENT CONSUMPTION----- APPROX. 7mA
 APPLIED VOLTAGE----- 5V DC±10%
 LINEARITY (INDEPENDENT)----- ±3.0%
 LOAD RESISTANCE----- 10K OHM MIN.
 LEVER ELECTRICAL ANGLE----- 30° MAX.
 RESOLUTION----- ESSENTIALLY INFINITE
 OUTPUT TEMP. CHARACTERISTIC----- BELOW ±2.5% V(OUT)
 INSULATION RESISTANCE----- OVER 100 MEGA OHMS @ 250VDC.
 DIELECTRIC STRENGTH----- 1 MINUTE AT 250 VAC
 DRIFT AT CENTER POSITION----- BELOW ±0.9% V(OUT)
 EMC IMMUNITY----- 50V/m (80MHz-1GHz SINE WAVE)

MECHANICAL

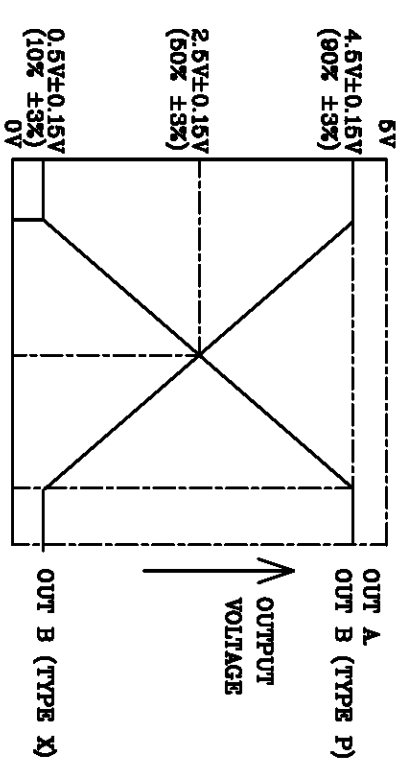
RANGE OF OPERATING LEVER----- ±15° ~ ±19° FROM CENTER
 OPERATING FORCE----- APPROX. 3.59 ~ 8.99 OZ.FORCE
 OPERATING TEMPERATURE----- -20°C TO +60°C
 LIFE EXPECTANCY----- 5 MILLION OPERATIONS
 SHOCK----- 30G
 VIBRATION----- 10- 55 Hz 98m/S*S (10G)

MATERIALS

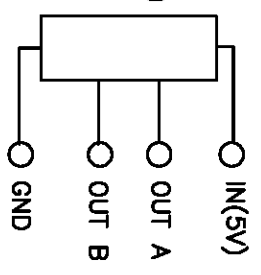
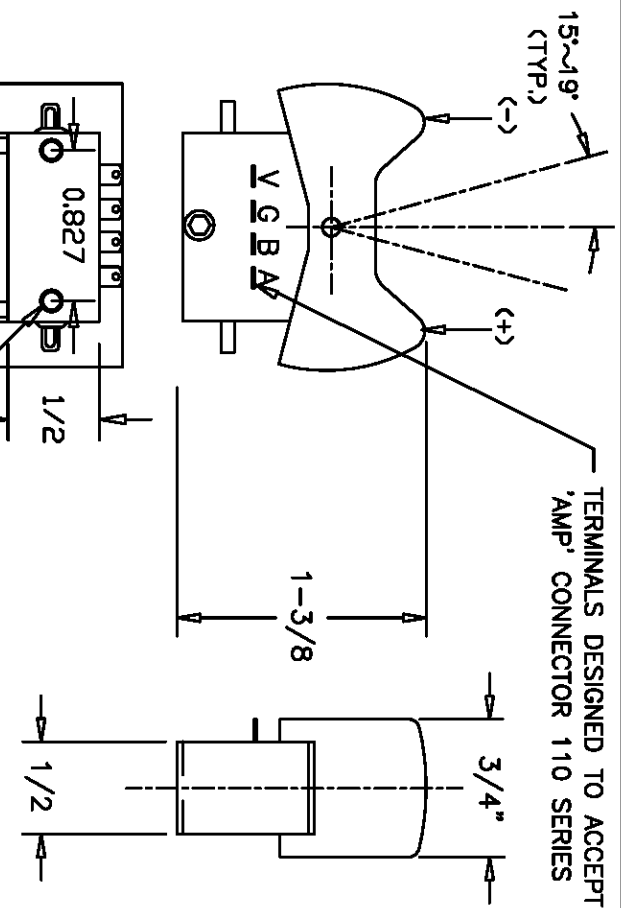
HOUSING----- HIGH TEMP. THERMO PLASTIC
 INGRESS PROTECTION----- IP65

OUTPUT TYPE

TYPE S : SINGLE OUTPUT TERMINAL A (TERMINAL B IS NC)
 TYPE X: DUAL OUTPUT, CROSS
 TYPE P: DUAL OUTPUT, PARALLEL

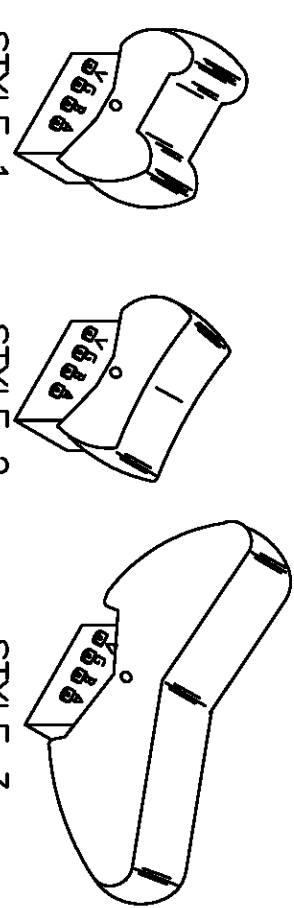


REV.	BY	DATE	P/N
			J3RH



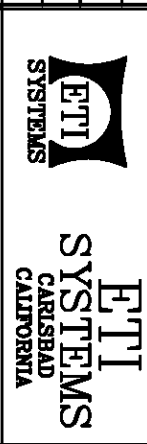
NOMENCLATURE

J3RH - X 1
 ROCKER ARM STYLE(1,2 OR 3)
 OUTPUT TYPE(S,X OR P)
 JOYSTICK SERIES



TOLERANCES
 XX = +/- .010" FRACT. = +/- 1/64"
 XXX = +/- .005" ANGLES = +/- 1/2°
 ALL SPECIFICATIONS SUBJECT TO CHANGE WITHOUT NOTICE.

SCALE	DATE	3-24-05
BY	APPRVD.	AT
CODE	IDENT.	19477



TITLE
 HALL EFFECT
 ROCKER POT

PART NO.
 J3RH