

**SPECIFICATIONS**

**ELECTRICAL**

RESISTANCE TOLERANCE----- 10K OHMS  
 RESISTANCE LINEARITY (INDEPENDENT)----- ±15%  
 POWER RATING----- 0.1 WATT  
 LEVER ELECTRICAL ANGLE----- \*X° & \*Y°: 20°  
 RESOLUTION----- ESSENTIALLY INFINITE  
 OUTPUT SMOOTHNESS----- BELOW 0.2% AGAINST INPUT VOLTAGE  
 CONTACT RESISTANCE VARIATION----- BELOW 6% C.R.V.  
 INSULATION RESISTANCE----- 1000 MEGA OHMS @ 500VDC.  
 DIELECTRIC STRENGTH----- 1 MINUTE AT 500 VAC  
 MAX. WIPER OUTPUT----- 1 mA RECOMMENDED, 5 mA MAX.

**MECHANICAL**

RANGE OF OPERATING LEVER----- "X" & "Y": ±10° ~ ±15° FROM CENTER  
 OPERATING FORCE----- "X" & "Y": APPROX. 2.82 ~ 7.05 OZ.-F.  
 OPERATING TEMPERATURE----- -20°C TO +65°C  
 LIFE EXPECTANCY----- 5 MILLION OPERATIONS  
 WEIGHT----- APPROX. 2.5 TO 3.2 OZ.  
 SHOCK----- APPROX. 2.5 TO 3.2 OZ.  
 1.0 OZ.

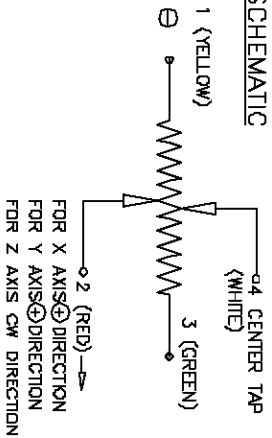
**MATERIALS**

HOUSING----- ALUMINUM AND HIGH TEMP. THERMO PLASTIC  
 ELEMENT----- CONDUCTIVE PLASTIC  
 KNOB----- HARD PLASTIC

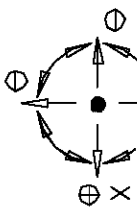
**OPTIONS**

J34 IS AVAILABLE WITH POTENTIOMETERS OR SWITCHES IN HOUSING.  
 1 & 3 DIMENSIONAL LEVER ACTION.

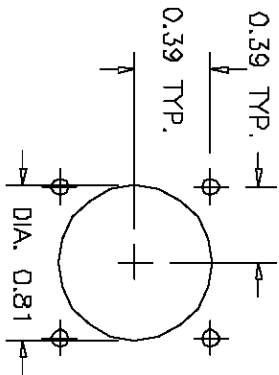
**SCHEMATIC**



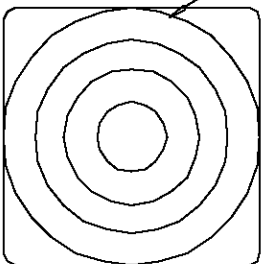
**"C" LEVER DIRECTION**



**PANEL ARRANGEMENT**



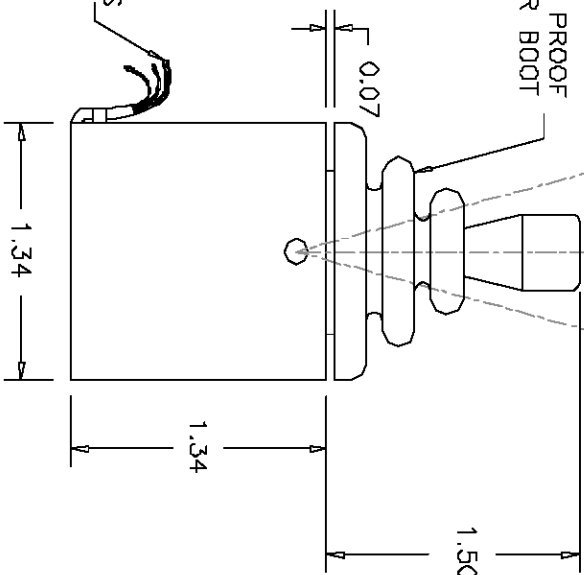
BLACK PLASTIC DRESS PANEL WITH MOUNTING HARDWARE.



1.34 TYP

10 TO 15 DEGREES TYP.

DUST PROOF RUBBER BOOT



APPROX. 12" LEAD WIRES LABELED X, Y, & Z. AWG28

REV.	BY	DATE	P/N
			J34-CN20-SB



**ETI SYSTEMS**  
 CARLSBAD  
 CALIFORNIA

2251 LAS PALMAS DR.  
 CARLSBAD, CA 92009  
 PHONE (760) 929-0749  
 FAX (760) 929-0748  
 WWW.ETISYSTEMS.COM

TITLE

JOYSTICK

PART NO.

J34-CN20-SB