

SPECIFICATIONS

ELECTRICAL

RESISTANCE RANGE ----- 1K TO 100K OHMS
 RESISTANCE TOLERANCE ----- ±15%
 CONFORMITY (PEAK TO PEAK) ----- ±0.5%
 ELECTRICAL ANGLE ----- 360°
 END RESISTANCE ----- 0.2% MAX.
 RESOLUTION ----- ESSENTIALLY INFINITE
 INSULATION RESISTANCE ----- 1000MEG OHMS @1000 VDC
 DIELECTRIC STRENGTH ----- 1 MINUTE AT 1000 VAC
 POWER RATING ----- 1.25 WATTS
 CONTACT RESISTANCE VARIATION----- BELOW 8% C.R.V.
 OUTPUT SMOOTHNESS ----- BELOW 0.1% AGAINST INPUT VOLTAGE

MECHANICAL

NO OF TURNS ----- 1
 MECHANICAL ROTATION ----- CONTINUOUS
 ROTATIONAL LIFE ----- 50,000,000 TURNS
 STOP STRENGTH ----- N/A
 TORQUE ----- 1.2 OZ. IN.
 WEIGHT ----- 4.2 OZ.

ENVIRONMENTAL

OPERATING TEMPERATURE ----- -55°C TO +105°C
 TEMPERATURE COEFFICIENT ----- ± 400 P.P.M./°C
 VIBRATION ----- 10HZ TO 2000HZ 15G
 SHOCK ----- 50G
 MOISTURE RESISTANCE ----- 40°C 95%RH 120 HOURS

MATERIALS

HOUSING ----- ANODIZED ALUMINUM
 SHAFT ----- STAINLESS STEEL
 TERMINALS ----- GOLD PLATED BRASS
 RESISTANCE ELEMENT ----- CONDUCTIVE PLASTIC

OPTIONAL FEATURES

SHAFT MODIFICATIONS
 REAR SHAFT
 O-RING SHAFT SEAL
 BUSHING MOUNT
 MULTIPLE SECTIONS

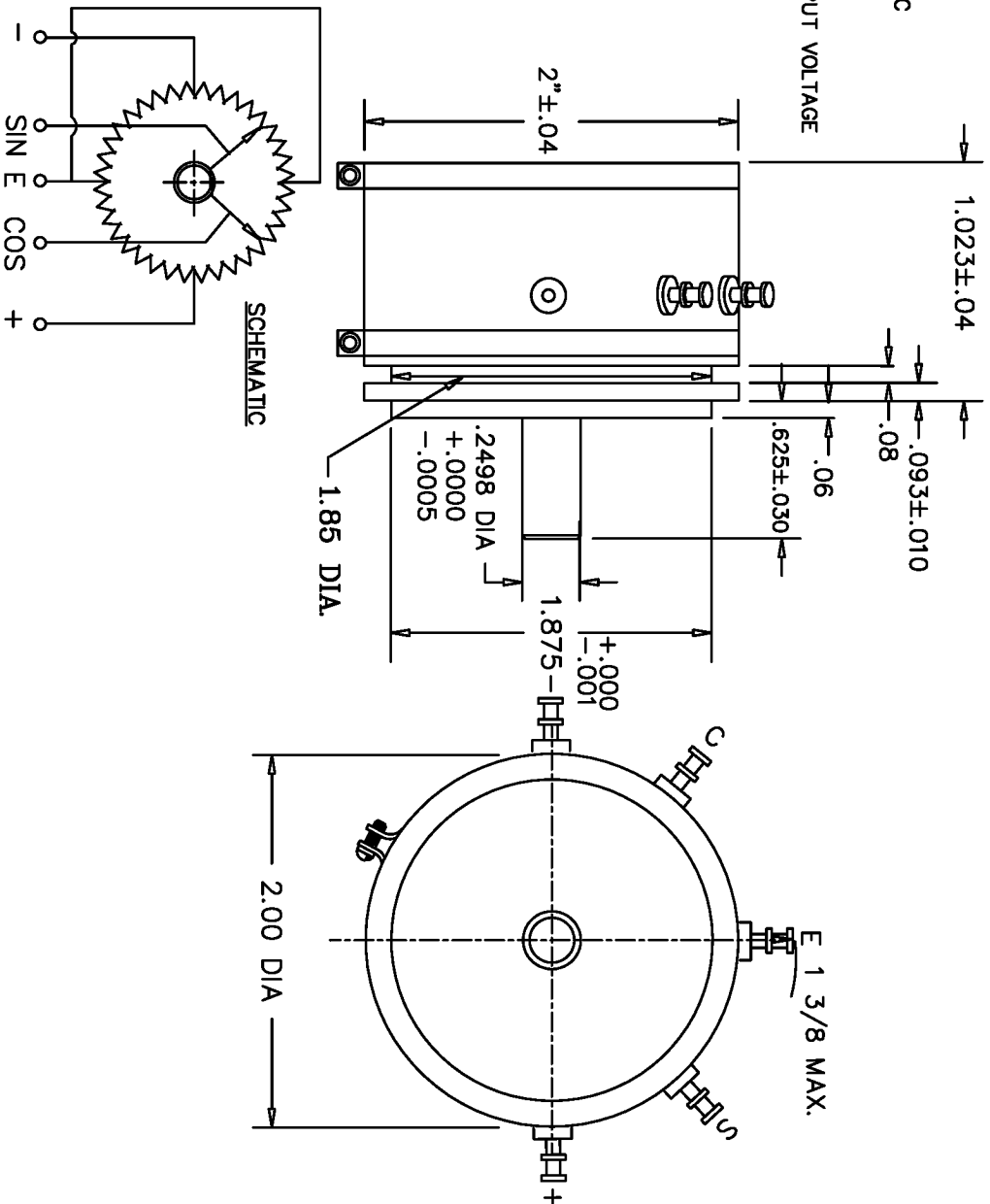
NOTES:

CONDUCTIVE PLASTIC.

TOLERANCES

XX = .010 FRACTIONS = ?/64
 XXX = ±.005 ANGLES = ±1/2°
 ALL SPECIFICATIONS SUBJECT TO CHANGE WITHOUT NOTICE.

REV.	BY	DATE	PART NO.
A	AT	7-9-02	SPSC50S



THIS DOCUMENT CONTAINS PROPRIETARY DATA OF POLARIS INDUSTRIAL ENTERPRISES, INC. NO DISCLOSURE, REPRODUCTION, OR USE OF ANY PART THERE OF MAY BE MADE EXCEPT BY WRITTEN PERMISSION.

SCALE:	NONE
DATE:	6-4-02
BY:	AT

APPR'VD	
CODE IDENT:	19477

TITLE
 SINE-COSINE
 SINGLE TURN POTENTIOMETER

ETI
 SYSTEMS
 OCEANSIDE
 CALIFORNIA
 PART NO.
 SPSC50S