

SPECIFICATIONS

ELECTRICAL

RESISTANCE RANGE ----- 100 TO 100K OHMS
 RESISTANCE TOLERANCE ----- ±5%
 LINEARITY(INDEPENDENT) ----- ±0.25%
 ELECTRICAL ANGLE ----- SEE CHART
 END RESISTANCE ----- .2% OR 20OHMS (WHICHEVER IS GREATER)
 ELECTRICAL NOISE(ENR) ----- 100 OHMS
 RESOLUTION ----- SEE CHART
 INSULATION RESISTANCE ----- 100 MEGOHMS @ 1000VDC
 DIELECTRIC STRENGTH ----- 1000 VAC MIN

MECHANICAL

NO OF TURNS ----- SEE CHART
 MECHANICAL ANGLE ----- SEE CHART
 ROTATIONAL LIFE ----- SEE CHART
 STOP STRENGTH ----- 96 OZ. IN. MIN.
 STARTING TORQUE ----- 5.0 OZ.IN.MAX
 WEIGHT ----- 4 OZ. (APPROX.)

ENVIRONMENTAL

OPERATING TEMPERATURE ----- -20°C TO +60°C
 TEMPERATURE COEFFICIENT ----- SEE CHART
 VIBRATION ----- 10HZ TO 2000HZ 10G
 SHOCK ----- 30G 11MS
 MOISTURE RESISTANCE ----- 40°C 95%RH 2000 HOURS

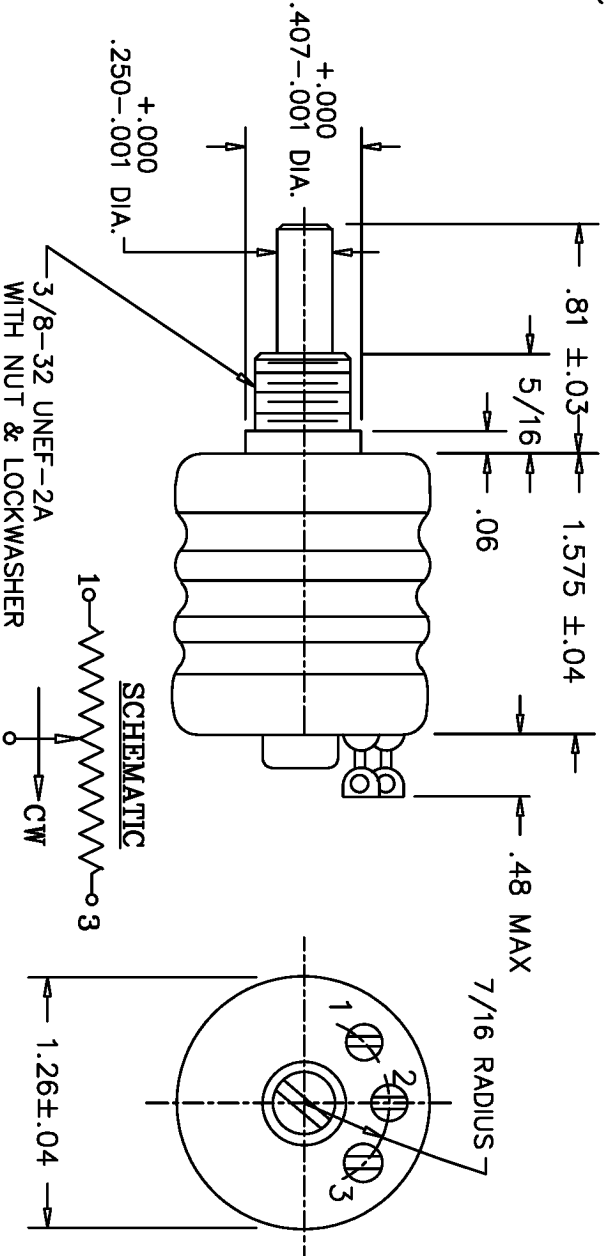
MATERIALS

HOUSING ----- METAL
 SHAFT ----- STAINLESS STEEL
 BUSHING ----- PLATED BRASS
 TERMINALS ----- GLASS HEADERS
 RESISTANCE ELEMENT ----- WIREWOUND

OPTIONAL FEATURES

SHAFT MODIFICATIONS
 REAR SHAFT
 SPECIAL ANGLES
 CENTER TAP

REV.	BY	DATE	PART NO.
A	PD	4-13 92	PART NO. MO20B WAS MO20
B	GC	1-16 01	ADDED NEW RESOLUTION/SPEC. CHARTS
C	GC	2-6 01	CHNGD CHART,INSUL.RESIS.,LINEARITY



RESOLUTION CHART (%)

DASH NO.	OHMS	100	200	500	1K	2K	5K	10K	20K	50K	100K
-3	.11	.10	.08	.07	.06	.05	.04	.03	.02	.01	.01
-5	.10	.08	.06	.05	.04	.03	.02	.02	.01	.01	.01
-10	.05	.03	.03	.02	.02	.02	.01	.01	.01	.01	.01

TABLED SPECIFICATIONS

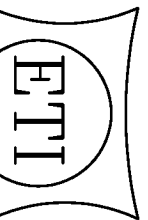
DASH NO.	NO.OF TURNS	MECHANICAL ANGLE+10°-0°	ELECTRICAL ANGLE ±5°	POWER RATING	ROTATIONAL LIFE
-3	3	1080°	1080°	.7WATTS	600,000
-5	5	1800°	1800°	1 WATT	1,000,000
-10	10	3600°	3600°	2 WATTS	2,000,000

NOTES:

WIREWOUND
 RESISTANCE
 ELEMENT

SCALE: NONE
 DATE: 1-16-01
 BY: GC

THIS DOCUMENT CONTAINS PROPRIETARY DATA OF POLARIS INDUSTRIAL ENTERPRISES,INC. NO DISCLOSURE, REPRODUCTION, OR USE OF ANY PART THERE OF MAY BE MADE EXCEPT BY WRITTEN PERMISSION.



CARLSBAD SYSTEMS CALIFORNIA

TOLERANCES

XX = .010 FRACTIONS = ?/64
 XXX = ±.005 ANGLES = ±1/2°

ALL SPECIFICATIONS SUBJECT TO CHANGE WITHOUT NOTICE.

APRVD: BF
 CODE IDENT: 19477

TITLE

OIL FILLED
 MULTI-TURN
 POTENTIOMETER

PART NO.

MO20B