

THIS DOCUMENT CONTAINS PROPRIETARY DATA OF POLARIS INDUSTRIAL ENTERPRISES, INC. NO DISCLOSURE, REPRODUCTION, OR USE OF ANY PART THERE OF MAY BE MADE EXCEPT BY WRITTEN PERMISSION.

REV.	BY	DATE	P/N
L	BT	7-24-0	LCPL

SPECIFICATIONS

ELECTRICAL

RESISTANCE RANGE --- SEE TABLE
 RESISTANCE TOLERANCE --- ±20%
 OUTPUT SMOOTHNESS --- BELOW 0.1% OF INPUT VOLTS
 CONTACT RESIS. VARIATION --- BELOW 2%
 INSULATION RESISTANCE --- 1000 MEGOHMS @ 500VDC
 DIELECTRIC STRENGTH --- 1 MINUTE AT 500 VAC
 RESOLUTION --- ESSENTIALLY INFINITE
MECHANICAL
 ROTATIONAL LIFE --- 10,000,000 STROKES

ENVIRONMENTAL

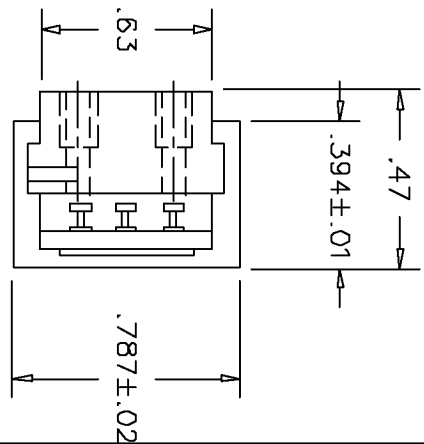
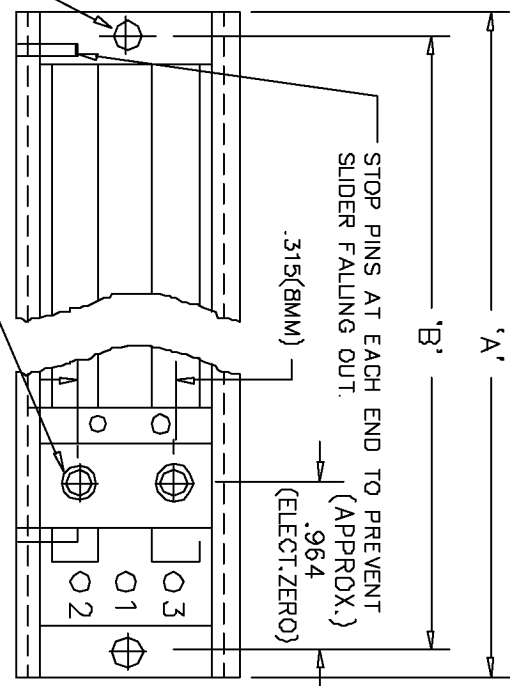
OPERATING TEMPERATURE --- -30°C TO +105°C
 TEMPERATURE COEFFICIENT --- ±400 PPM/°C
 VIBRATION --- 10HZ TO 2000HZ 15G
 SHOCK --- 50G 11MS
 MOISTURE RESISTANCE --- 40°C 95%RH 120 HOURS

MATERIALS

HOUSING --- ALUMINUM
 TERMINALS --- GOLD PLATED, BRASS
 RESISTANCE ELEMENT --- CONDUCTIVE PLASTIC

3/32 DIA. 2 PLCS. MOUNTING HOLES.

MOVEABLE CONTACT WITH #2-56 UNC-2B 5/32 DEEP THREADED HOLES, 2PLS.



SCHEMATIC
 1 2 3

MODEL NO.	LCPL115	LCPL153	LCPL200	LCPL275	LCPL300	LCPL400	LCPL458	LCPL500	LCPL533	LCPL610	LCPL1000	LCPL1220
ELECTRICAL STROKE	4.52 ±.04	6.00±.04	7.874 ±.04	10.826 ±.04	11.811 ±.04	13.748 ±.04	18.000±.04	19.685 ±.04	21.000 ±.04	24.000±.04	39.370 ±.04	48.000 ±.04
MECHANICAL STROKE (APPROX.)	4.646 ±.04	6.126 ±.04	8.000 ±.04	10.952 ±.04	11.929 ±.04	13.865 ±.04	18.118±.04	19.803 ±.04	21.197 ±.04	24.197±0.4	39.567 ±.04	48.197 ±.04
STANDARD RESISTANCE VALUES	1K,2K,5K,10K	1K,2K,5K,10K	2K,5K,10K	2K,5K,10K	5K,10K,20K	5K,10K,20K 50K,100K	5K,10K,20K 50K,100K	5K,10K,20K 50K,100K,200K	5K,10K,20K 50K,100K,200K	5K,10K,20K 50K,100K,200K	10K,20K,50K 100K,200K,500K	10K,20K,50K 100K,200K,500K
LINEARITY (INDEPENDENT)	±0.5%	±0.5%	±0.5%	±0.5%	±0.5%	±0.5%	±0.5%	±0.5%	±0.5%	±0.5%	±0.5%	±0.5%
POWER RATING	1 WATTS	1 WATTS	2 WATTS	2 WATTS	2.5 WATTS	3 WATTS	3 WATTS	4 WATTS	4 WATTS	4 WATTS	6 WATTS	6 WATTS
DIMENSION	A ±.04 B ±.02	6.49 7.60	9.843 9.450	12.796 12.403	13.780 13.386	17.716 17.323	19.869 19.575	21.654 21.260	22.959 22.575	25.869 25.575	41.338 40.944	50.166 49.772

TOLERANCES

XX = +/- .010" FRACT. = +/- 1/84"
 XXX = +/- .005" ANGLES = +/- 1/2°
 ALL SPECIFICATIONS SUBJECT TO CHANGE WITHOUT NOTICE.

SCALE	DATE: 8-10-86	
	BY	BT
NONE	APPRVD	BT
CODE	IDENT:	19477



ETI SYSTEMS
 CARLSBAD CALIFORNIA

TITLE
 OPEN FRAME
 LINEAR MOTION
 POTENTIOMETER

PART NO.
 LCPL