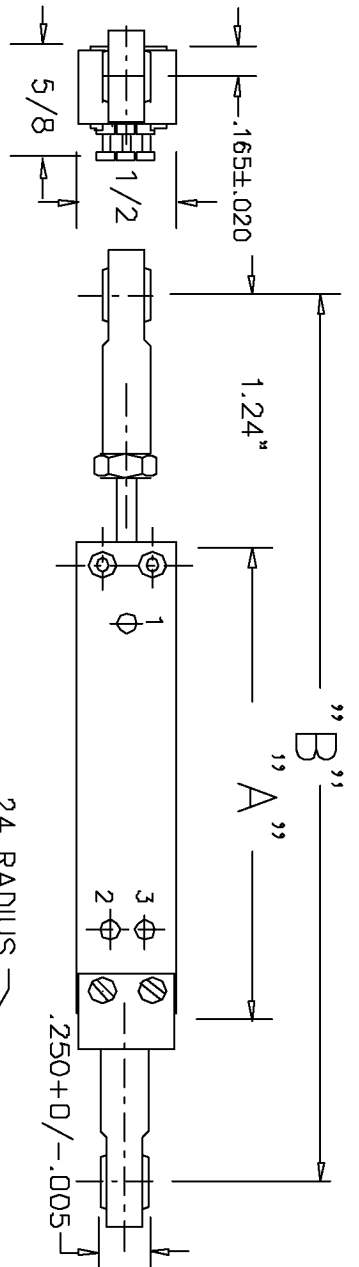


THIS DOCUMENT CONTAINS PROPRIETARY DATA OF QUALITY INDUSTRIAL ENTERPRISES, INC. NO REPRODUCTION, REPRODUCTION, OR USE OF ANY PART THEREOF MAY BE MADE EXCEPT BY WRITTEN PERMISSION.			
REV.	BY	DATE	P/N
E	BT	9-17-99	'B' DIM REDUCED 1" LCP12Y

**SPECIFICATIONS**

RESOLUTION \_\_\_\_\_ INFINITE  
 OUTPUT SMOOTHNESS \_\_\_\_\_ LESS THAN 0.1% INPUT VOLTAGE  
 CONTACT RESIS. VARIATION \_\_\_\_\_ LESS THAN 2%  
 DIELECTRIC STRENGTH \_\_\_\_\_ 1000 MEGOHMS AT 500VDC MIN.  
 INSULATION RESISTANCE \_\_\_\_\_ 500 VAC MIN.  
 FRICTION \_\_\_\_\_ 1.8 OZ. (3.6 OZ. FOR LCP12Y)  
 STOP STRENGTH \_\_\_\_\_ 20 OZ. MIN.  
 RESISTANCE TEMPCO \_\_\_\_\_ ±400 PPM/°C  
 WEIGHT \_\_\_\_\_ 10 TO 35 GRAMS  
 LIFE EXPECTANCY \_\_\_\_\_ 20 MILLION  
 BEARINGS \_\_\_\_\_ NYLON  
 TEMPERATURE RANGE \_\_\_\_\_ -50° TO 105° C.



**MATERIALS**

BODY \_\_\_\_\_ ALUMINUM (BLACK ANODIZED)  
 LID \_\_\_\_\_ HIGH TEMP. PLASTIC  
 SHAFT \_\_\_\_\_ STAINLESS STEEL  
 TERMINALS \_\_\_\_\_ BRASS GOLD PLATED  
 RESISTANCE ELEMENT \_\_\_\_\_ CONDUCTIVE PLASTIC

**OPTIONS AVAILABLE**

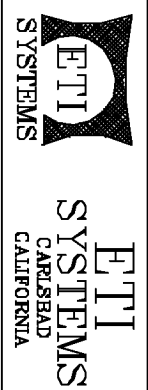
SPECIAL ENDED SHAFTS  
 SPECIAL RESISTANCE VALUES  
 SPECIAL LINEARITY  
 NON STANDARD STROKES  
 WIREWOUND RESISTANCE ELEMENT  
 BRONZE BUSHINGS

MODEL NO.	LCP12Y-12	LCP12Y-25	LCP12Y-50	LCP12Y-100
STD. RESIS. VALUES	500, 1K, 2K 5K, 10K	500, 1K, 2K 5K, 10K	500, 1K, 2K 5K, 10K	1K, 2K, 5K 10K, 20K
RESISTANCE TOL.	±20%	±20%	±20%	±20%
LINEARITY (IND.)	±1.5%	±1.0%	±0.7%	±0.5%
POWER RATING	0.2 WATT	0.4 WATT	0.7 WATT	1.2 WATT
STROKE MECH +.1-.0	1/2"	1"	2"	4"
STROKE ELECT ±.02	1.50	2.00	3.00	5.00
'A' DIM ±0.04	1.50	2.00	3.00	5.00
'B' DIM (REF.)	3.62	4.12	5.12	7.12

**TOLERANCES**

XX = +/- .010" FRACT. = +/- 1/8"  
 XXX = +/- .005" ANGLES = +/- 1/2"  
 UNLESS SPECIFIED OTHERWISE.  
 ALL SPECIFICATIONS SUBJECT TO CHANGE WITHOUT NOTICE.

SCALE	DATE:	11-12-89
NONE	BY	
APPRVD	BT	
CODE IDENT:	19477	



TITLE  
 LINEAR MOTION  
 POTENTIOMETER

PART NO.  
 LCP12Y

