

THIS DOCUMENT CONTAINS PROPRIETARY DATA OF POLARIS INDUSTRIAL ENTERPRISES, INC. NO DISCLOSURE, REPRODUCTION, OR USE OF ANY PART THERE OF MAY BE MADE EXCEPT BY WRITTEN PERMISSION.

REV.	BY	DATE	P/N
A	BT	10-27-94	MH12S-10 REVISED

SPECIFICATIONS

ELECTRICAL

RESISTANCE RANGE ----- 1K, 2K, 5K, 10K, 20K, 50K, 100K OHMS
 RESISTANCE TOLERANCE ----- ±10%
 LINEARITY TOLERANCE ----- ±0.4%
 RESOLUTION ----- ESSENTIALLY INFINITE
 OUTPUT SMOOTHNESS ----- <0.05% AGAINST INPUT VOLTAGE
 ELECTRICAL ANGLE ----- 3600±5°
 CONTACT RESISTANCE VARIATION ----- <5% C.R.V.
 POWER RATING ----- 1.0 WATTS
 MAXIMUM VOLTAGE ----- 450 VOLTS
 INSULATION RESISTANCE ----- 1,000 MEGOHMS @ 500 V.D.C.
 DIELECTRIC STRENGTH ----- 1,000 V.A.C.

MECHANICAL

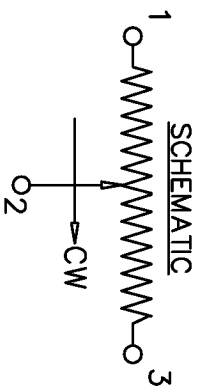
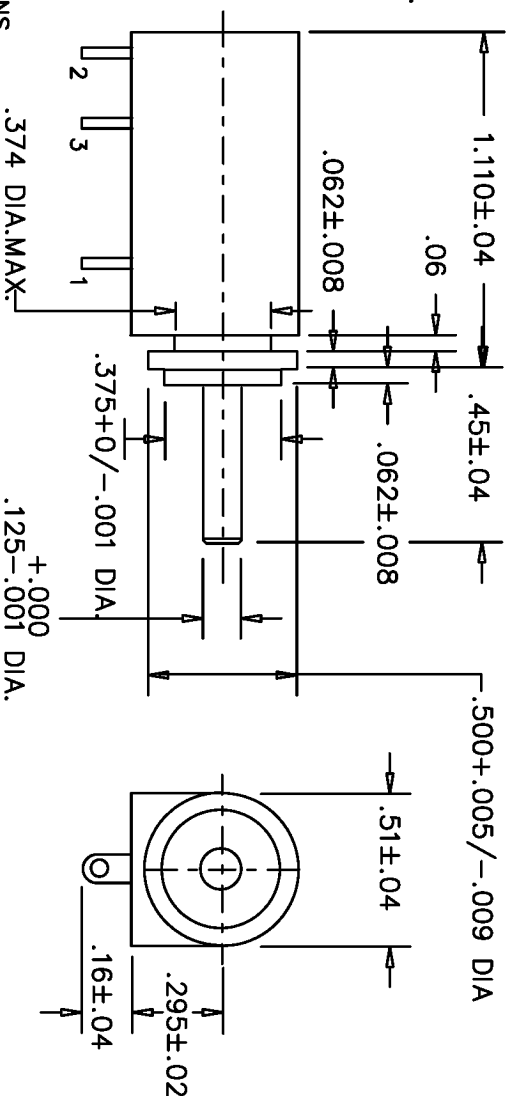
NUMBER OF TURNS ----- 10
 MECHANICAL ANGLE ----- 3600°±15'-0"
 TORQUE ----- 0.4 OZ.IN.
 STOP STRENGTH ----- 20 OZ. IN. MAX.
 WEIGHT ----- 0.35 OZ.

ENVIRONMENTAL

OPERATING TEMPERATURE ----- -55°C to +105°C
 TEMPERATURE COEFFICIENT ----- ±100 PPM/°
 VIBRATION ----- 10Hz TO 2000Hz 15G
 SHOCK ----- 50G 11ms
 MOISTURE RESISTANCE ----- 40°C 95%RH 120 HOURS
 ROTATIONAL LIFE ----- 10,000,000 SHAFT REVOLUTIONS

MATERIALS

HOUSING ----- HIGH TEMPERATURE PLASTIC
 SHAFT ----- STAINLESS STEEL
 SERVO MOUNT ----- ALUM., ANODIZED W/BALL BEARING
 TERMINALS ----- GOLD PLATED
 ELEMENT ----- HYBRID



TOLERANCES

XX = +/- .010" FRACT. = +/- 1/64"
 XXX = +/- .005" ANGLES = +/- 1/2°
 ALL SPECIFICATIONS SUBJECT TO CHANGE WITHOUT NOTICE.

SCALE	DATE
NONE	10-22-94
APPR'D. BY	BT
CODE IDENT.	19477



ETI SYSTEMS
 CARLSBAD
 CALIFORNIA

TITLE

MULTI-TURN
 POTENTIOMETER

PART NO.

MH12S-10